



 **MATRIX**<sup>®</sup>

**MVC-300**

**VERTICAL FORM/FILL/SEAL**

**F&T**

**FLEXIBLES  
& TRAYS**



# MVC-300

## VERTICAL FORM/FILL/SEAL

### Servo-Driven Continuous Box-Motion Offers Exceptional Performance with the HMI you need.

The Matrix MVC-300 is a servo-driven continuous box-motion bagger, providing cutting-edge technology with a high-speed jaw system that allows for maximum dwell time on sealing. This delivers faster speeds and accuracy, with films like polyethylene, that normally require longer seal times. The film is pulled while the jaw is closed as opposed to waiting until the jaw opens to pull film, gentle product handling occurs as the jaw is in the elevated position when product is dropped into the bag, minimizing drop distance. The jaw then lowers, pulling the film down with the movement to seal the top of the bag.



*The Matrix MVC-300 offers the state-of-the-art Beckhoff HMI control systems delivering a highly intuitive, and easy to use packaging machine, with wireless remote diagnostics.*

#### FEATURES & BENEFITS

- Made in the USA
- Open channel stainless steel 3 NEMA 4X electrical enclosure, 304 frame grounded & polished "sanitary" and adjustable mounting feet or optional casters
- Servo-driven continuous box-motion jaw for maximum speed and jaw dwell time
- Recipe based AutoPro™ with Beckhoff Servo Adjustment System for size change
- High performance vacuum film pull-belts (improves performance with difficult films)
- Pivoting electrical cabinet
- 12" multi-touch HMI with 800 x 600 screen resolution
- Electronic film registration mark, pneumatic film roll brake, automatic ultrasonic film tracking
- Comprehensive self-diagnostic tools
- Cloud based wireless remote diagnostics

#### OPTIONS

- Mechanical or heated hole punch
- Thermal transfer printer with integrated signal encoder
- Independent seal platens for poly film
- Digital gas flush
- Side gusset (top and bottom)
- Load shelf (intermittent)
- UL 508A (built and certified in-house)
- Power unwind
- Washdown
- Flat bottom bags

#### BAG STYLES



PILLOW BAG



GUSSET BAG



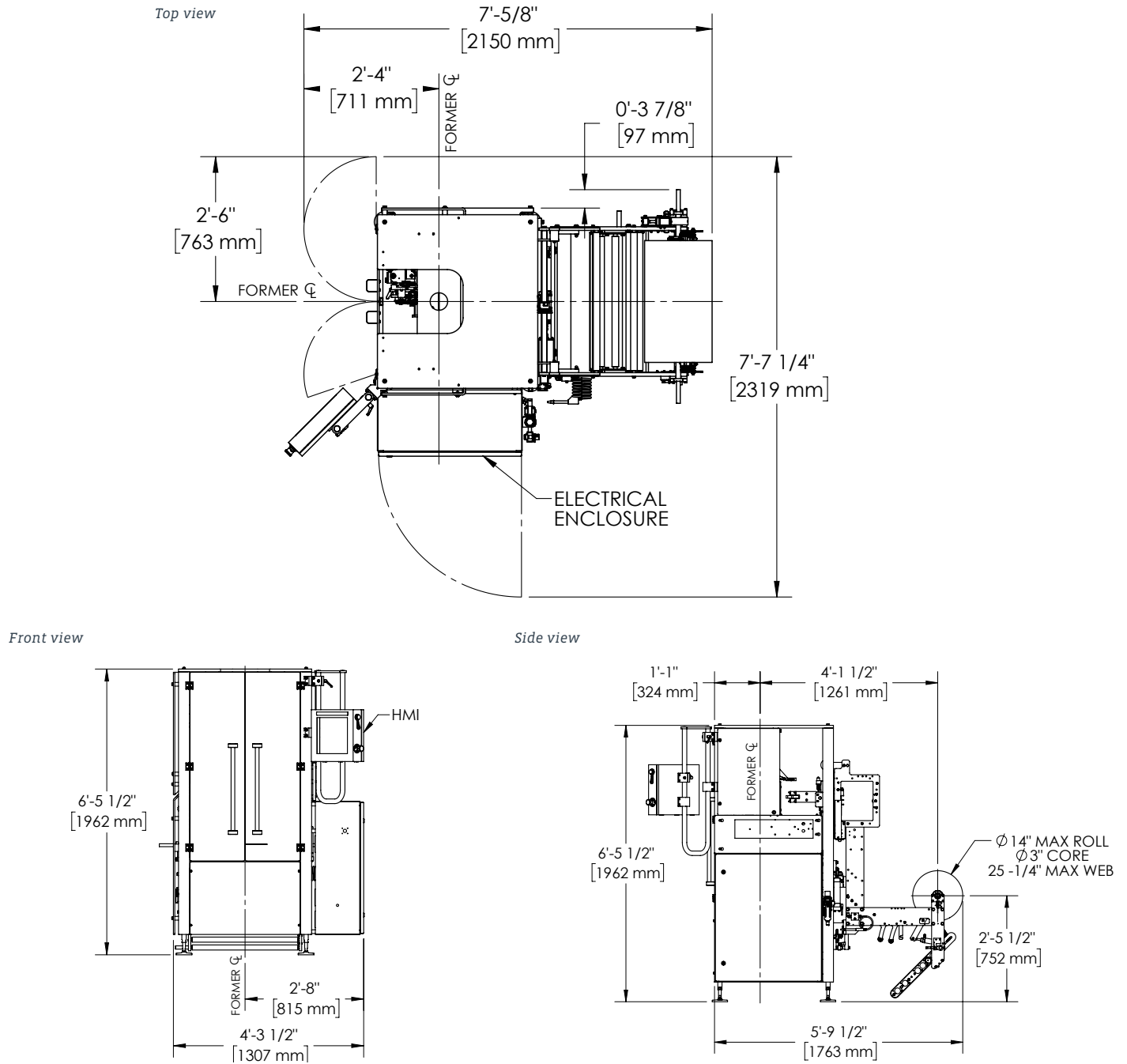
FLAT BOTTOM BAG



MODIFIED DOYPOUCH FILM WITH STAND-UP POUCH SYSTEM OPTION, (available with or without zipper)



## CONFIGURATION



## TYPICAL PRODUCT SPECIFICATIONS

<b>Cycle Speed</b>	Up to 200 BPM (depending on application)	
<b>Electrical</b>	230V (+/- 5%), 30 AMP, 3PH, 50/60 Hz	
<b>Air Pressure</b>	10 CFM @ 80 PSIG (+/-20%) (demand varies by application)	
<b>Bag Size</b>	<b>Width</b>	<b>Length</b>
<b>Minimum</b>	2.75" (70 mm)	2.75" (70 mm)
<b>Maximum</b>	12" (305 mm)	16" (406 mm)

<b>Film Roll (Std)</b>	14" diameter
<b>Film</b>	Laminate or poly film sealing capability
<b>Filler</b>	Compatible with all types



Matrix is an industry leading manufacturer of rugged, cost competitive, and easy-to-operate vertical form fill & seal (VFFS) equipment for all types of flexible packaging and operates as a master distributor for INVpack offering stickpack and sachet machines, and Pacraft offering pre-made pouch packaging machines. Experienced in many flexible packaging applications, Matrix has the ability and knowledge to tailor highly efficient and sensible packaging systems and is committed to optimizing solutions for customers on a global scale. Matrix is a product brand of ProMach, a global leader in packaging line solutions. As part of the ProMach Flexibles & Trays business line, Matrix helps our packaging customers protect and grow the reputation and trust of their consumers. ProMach is performance, and the proof is in every package. Learn more about Matrix at [www.MatrixPM.com](http://www.MatrixPM.com) and more about ProMach at [www.ProMachBuilt.com](http://www.ProMachBuilt.com).

2395 Dakota Dr.

Grafton, WI 53024

P: 262-268-8300

TOLL FREE: 888-Matrix1

E: [Matrix@ProMachBuilt.com](mailto:Matrix@ProMachBuilt.com)

[MatrixPM.com](http://MatrixPM.com)

