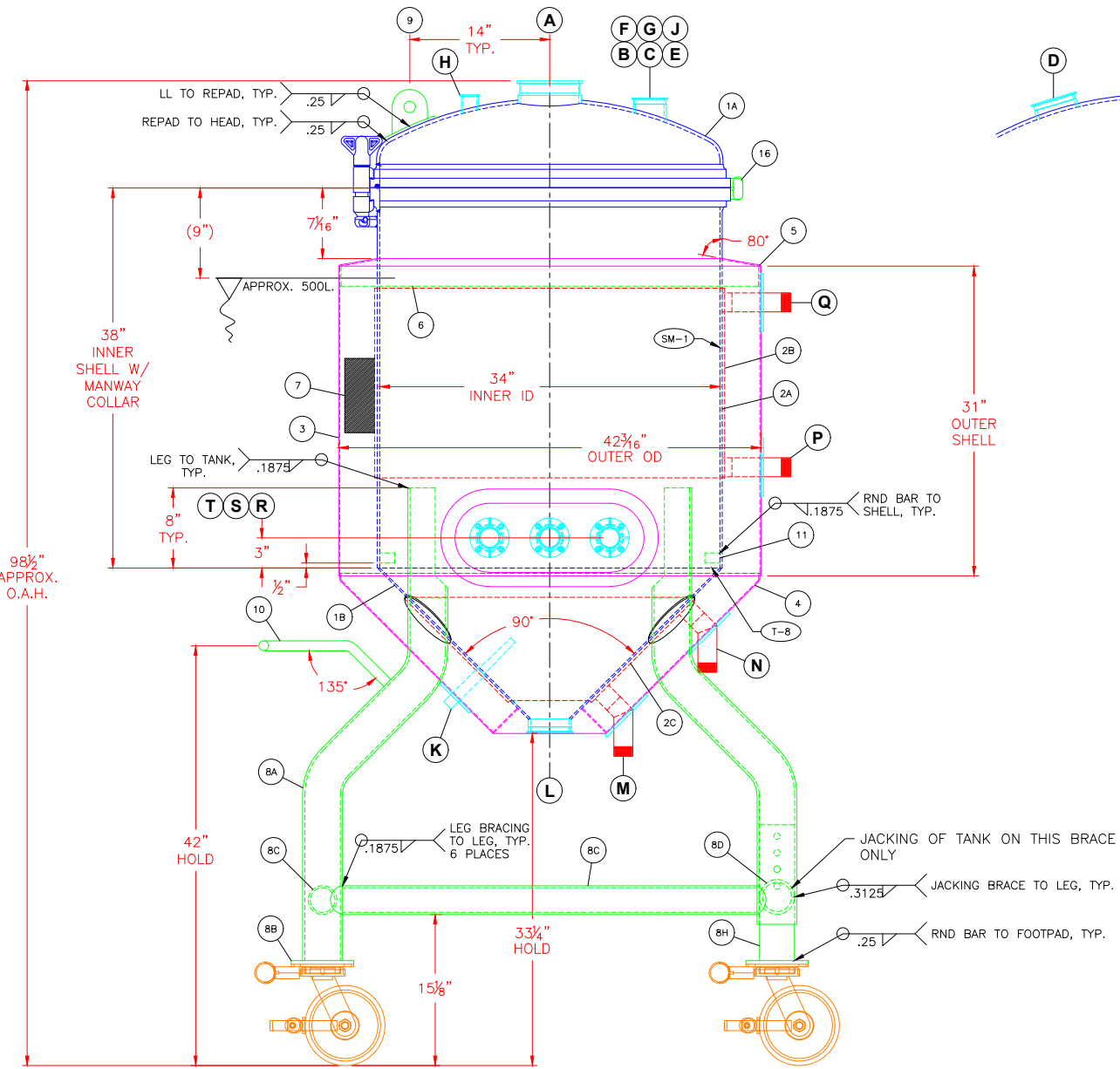
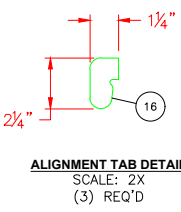
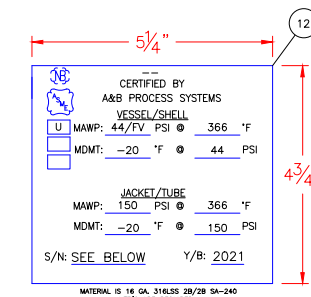


NOZZLE SCHEDULE				PROJECT ±1/4 IN		WELD SIZE						
MARK	SIZE	CONNECTION TYPE	SERVICE	FLUSH	DETAIL NO.	T1	T2	T3	T4	T5	T6	T7
A	6"	ASME TC FERRULE	INLET	FLUSH	2 1/4"	N-1	FULL	.28	-	-	-	-
B	3"	ASME TC FERRULE	TEMPERATURE	FLUSH	1 1/2"	N-1	FULL	.216	-	-	-	-
C	3"	ASME TC FERRULE	CIP	FLUSH	1 1/2"	N-1	FULL	.216	-	-	-	-
D	4"	ASME TC FERRULE	SIGHTGLASS	FLUSH	1 1/2"	N-1	FULL	.237	-	-	-	-
E	3"	ASME TC FERRULE	CIP	FLUSH	1 1/2"	N-1	FULL	.216	-	-	-	-
F	3"	ASME TC FERRULE	PRESSURE INDICATOR	FLUSH	1 1/2"	N-1	FULL	.216	-	-	-	-
G	3"	ASME TC FERRULE	CIP	FLUSH	1 1/2"	N-1	FULL	.216	-	-	-	-
H	1 1/2"	ASME TC FERRULE	PRESSURE RELIEF	FLUSH	1 1/2"	N-1	FULL	.153	-	-	-	-
J	3"	ASME TC FERRULE	CIP	FLUSH	1 1/2"	N-1	FULL	.216	-	-	-	-
K	1/2"	FNPT	TEMPERATURE	4 1/2" AS REQ'D	N-1	FULL	.1675	-	-	-	-	-
L	4"	ASME TC FERRULE	OUTLET	FLUSH	1 1/2"	N-6	-	-	-	-	-	-
M	1 1/2"	MNPT	HTS INLET/OUTLET	-	SEE DETAIL	OS	-	-	-	-	-	-
N	1 1/2"	MNPT	HTS INLET/OUTLET	-	SEE DETAIL	OS	-	-	-	-	-	-
P	1 1/2"	MNPT	HTS INLET/OUTLET	-	SEE DETAIL	OS	-	-	-	-	-	-
Q	1 1/2"	MNPT	HTS INLET/OUTLET	-	SEE DETAIL	OS	-	-	-	-	-	-
R	2"	TC BOLT CONNECT	FUTURE INSTRUMENT	FLUSH AS REQ'D	N-1	FULL	.23	-	-	-	-	-
S	2"	TC BOLT CONNECT	FUTURE INSTRUMENT	FLUSH AS REQ'D	N-1	FULL	.23	-	-	-	-	-
T	2"	TC BOLT CONNECT	FUTURE INSTRUMENT	FLUSH AS REQ'D	N-1	FULL	.23	-	-	-	-	-

STANDARD - NOZZLE PROJECTIONS GIVEN IN SCHEDULE ARE FOR SHORT SIDE LENGTHS MEASURED FROM ID OF VESSEL. NOZZLE PROJECTION MEASUREMENTS ARE TAKEN FROM THE INSIDE. NOZZLE LENGTHS ON DISHED HEADS OR SIDEWALLS NOT TO EXCEED 1 1/2 PIPE DIAMETERS FROM SHORT SIDE UNLESS NOTED OTHERWISE IN NOZZLE SCHEDULE



PLACE 1.5" ABOVE SIDEWALL ALCOVE @ 270° A&B LOGO TO BE PLACED 1.5" BELOW TOP HEAD SEAM

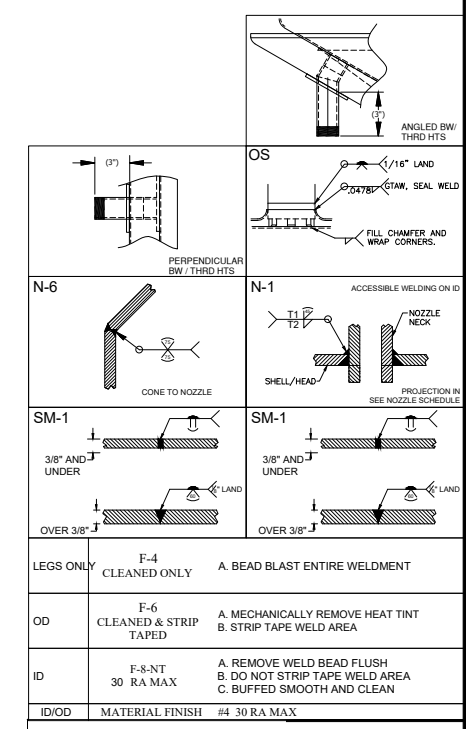


DESIGN DATA		
DESIGN PRESSURE, PSIG	44/EV	150
DESIGN TEMPERATURE, °F	366	366
HYDROTEST PRESSURE, PSIG	59	214
MAWP, PSIG	44	150
M.D.M.T., °F	-20	-20
CORROSION ALLOWANCE, IN	-	-
RADIOGRAPHIC EXAMINATION	NONE	-
JOINT EFF. TOP HD./SHELL/BTM HD.	.70/.70/.70	-
WIND CODE	INDOORS	-
SEISMIC CODE	- IBC 2018 - Sa=180.1%, S1=68.5%, I=1, SITE CLASS D	-
TRANSFER MEDIA	UNKNOWN	-
SPECIFIC GRAVITY OF PRODUCT	1.50	-
ERECTOR (SHIPPING) WEIGHT, LBS	APPROX. 3,000	-
OPERATING WEIGHT	APPROX. 5,400	-
DATA NOT SHOWN ARE NOT FACTOR IN DESIGN		

- NOTES:
- UNLESS OTHERWISE SPECIFIED ALL DIMENSIONS ARE IN INCHES.
 - DIMENSIONS ENCLOSED WITHIN PARENTHESES INDICATE REFERENCE.
 - EQUIVALENT ALTERNATIVE MATERIAL MAY BE USED ONLY AFTER CUSTOMER AND AUTHORIZED INSPECTOR'S APPROVAL.
 - ALL WELDS TO BE CONTINUOUS WELDED PER MANUFACTURER'S STD UNLESS OTHERWISE NOTED.
 - WELDS SHALL BE NEAT IN APPEARANCE, FREE OF SLAG, UNDERCUTS AND OTHER DEFECTS.
 - VESSEL TO BE THOROUGHLY CLEANED AND DRIED WHERE ACCESSIBLE BEFORE SHIPPING.
 - PROTECT ALL MACHINED SURFACES, AND ALL CONNECTIONS WITH WOOD OR PLASTIC PROTECTORS BEFORE SHIPMENT.
 - CODE BOUNDARY TO END 1" ABOVE AND 1" BELOW EDGE OF DIMPLE PLATE.
 - REINFORCING PADS AND PAD SECTIONS SHALL HAVE 1/8" WEEP HOLE LOCATED AS LOW AS POSSIBLE IN THE PAD WHEN THE VESSEL IS IN OPERATING POSITION.
 - OUTER SHELL TO INCLUDE 1" DIA. VENT W/ 1/8" DIA. HOLES LOCATED AT LOWEST POINT.
 - WELD 70GA X 1 1/2" X 3" C-CHANNEL TO OUTER SHELL SEAM ON THE INSIDE FOR EXTRA STIFFNESS (OUTER SHELL TO OVERLAP).
 - FLANGE BOLT HOLES SHALL STRADDLE MAJOR VESSEL CENTERLINES UNLESS NOTED.
 - IF USED IN CONTACT WITH MATERIALS CONTAINING SALT, CHLORIDES OR OTHER CORROSIVE MATERIALS, THE CORROSION RESISTANCE OF THIS EQUIPMENT IS NOT THE RESPONSIBILITY OF A&B PROCESS SYSTEMS CORP.
 - OTHER SAFETY STATEMENTS AND ADDITIONAL INFORMATION ABOUT THE EQUIPMENT CAN BE FOUND IN THE "OWNERS GENERAL INSTRUCTIONS" MANUAL. ALL PERSONNEL RESPONSIBLE FOR OPERATION AND MAINTENANCE OF THE EQUIPMENT SHOULD READ AND THOROUGHLY UNDERSTAND THE MANUAL PRIOR TO ATTEMPTING TO OPERATE OR PERFORM MAINTENANCE ON THE EQUIPMENT. THE CONTENTS OF THE MANUAL ARE NOT INTENDED TO REPLACE OR ELIMINATE YOUR OWN SAFETY PRACTICES.
 - (8) TANK(S) REQUIRED AS SHOWN.
 - USE BURST TEST PROCEDURE #107.
 - UNLESS OTHERWISE NOTED, NOZZLES HAVE NOT BEEN DESIGNED FOR ANY APPLIED LOADS.

MACHINING TOLERANCES (UNLESS NOTED OTHERWISE)	FABRICATION TOLERANCES (UNLESS NOTED OTHERWISE)	NOZZLE LEVEL TOLERANCE (UNLESS OTHERWISE NOTED)
XXX = ± .005	X OR FRACT. = ± 1/4	NOMINAL NOZZLE SIZE
XX = ± .010	HOLE DIAMETERS = ± 1/8	MAX TOLERANCE
X = ± .020	HOLD DIMS ± 1/8"	2" - 4"
X OR FRACT. = ± .030	X DEGREE = ± 1 DEGREE	6" - 12"
TOLERANCES DO NOT APPLY TO LISTED REF. DIM'S	BOLT CIRCLE CENTER LINE	14" - 36"
	15° MAX ROTATION	OVER 36"

BILL OF MATERIAL					
ITEM	QTY	DESCRIPTION	MAT'L SPEC	DWG/REF	NOTES
1A	1	TOP HEAD - 34" ID TO MANWAY KIT, FDA SILICONE GASKET, 5/16" THK COVER	SA-240-316/L		CUT
1B	1	HANDLE, DOUBLE SPRING ASSIST HINGE ASSEMBLY	-		-
2A	1	BTM HEAD - 70A #34" ID 90° INC. CONE	SA-240-316/L		-1
2B	1	SHELL - 1/4" THK #34" ID X 38" TALL (INCLUDING MANWAY COLLAR)	SA-240-316/L		-2
2C	1	SHELL HTS - 14GA A&B PLUG WELDED DIMPLE	SA-240-304/L		-2
2D	1	BTM HEAD HTS - 14GA A&B PLUG WELDED DIMPLE	SA-240-304/L		-1
3	1	OUTER TANK SHELL - 12GA #42" OD 31" TALL	SA-240-304/L		-
4	1	OUTER BOTTOM HEAD - 12GA #42" OD 90° INC. CONE 3/8" KR 1/2" SF	SA-240-304/L		CUT
5	1	BREAST RING - 12GA	SA-240-304/L		-
6	1	BACKING RING - 10GA X 2" WIDE	SA-240-304/L		-
7	1	TANK WRAP - 3" THICK MINERAL WOOL	MINERAL WOOL		-
8A	4	LEGS - 3 1/2" SCH 40S PIPE, POL OD	SA-312-304/L		-8
8B	4	FOOTPAD - 4 1/2" X 6 1/4" X 3/8" THK	304/L		-8
8C	3	LEG BRACING - 2 1/2" SCH 40S PIPE, POL OD	304/L		-
8D	1	LEG BRACING - 3" SCH 80S PIPE, POL OD	304/L		-
8E	4	LEG SEAL RING - PIPE TITE BOOT - SIZE 4, FLAT, SILICONE	SS/SILICONE		-
8F	4	CASTERS - 8" DIA SWIVEL LOCKING CASTER W/BRAKE, NON MARKING SOLID	ZINC PLATED		-
8G	16	CASTER MOUNTING - 1/2"-13 UNC HHCS X 1 1/2" LG	18-8		1,800 LBS EA
8H	2	ADJUSTABLE LEG FOR TANK TIPPING	304/L		-8
9A	3	TANK LIFTING LUGS - 1/2" THK X 3 1/2" X 4 3/4"	SA-240-304/L		CUT
9B	3	LIFT LUG REPADS - 1/4" THK X 2" X 5"	SA-240-304/L		CUT
10	1	PUSH HANDLE - FORMED 1" ROUND BAR	SA-479-304/L		-
11	6	INSIDE FINGERS - 1" DIA. RND BAR X 1 1/2" LONG	SA-479-316/L		-
12	1	A&B ASME ID TAG	SA-240-316/L		-
13	1	A&B LOGO	VINYL		-
14	1	DECAL - DANGER CONFINED SPACE	VINYL		-
15	1	DECAL - CAUTION CHEMICAL HAZARD	VINYL		-
16	3	ALIGNMENT TABS - 1/4" THK	SA-240-304/L		CUT
A	1	FERRULE - 6" ASME TC FERRULE X 4 1/2" LG (28" MIN. WALL)	SA-312-316/L		-
B,C	2	FERRULE - 3" ASME TC FERRULE X 6" LG (220" MIN. WALL)	SA-479-316/L		-
D	1	FERRULE - 4" ASME TC FERRULE X 4" LG (255" MIN. WALL)	SA-479-316/L		-
E,F,G,J	4	FERRULE - 3" ASME TC FERRULE X 6" LG (220" MIN. WALL)	SA-479-316/L		-
H	1	FERRULE - 1 1/2" ASME TC FERRULE X 3" LG (153" MIN. WALL)	SA-479-316/L		-
K	1	THERMOWELL - 1/2" FNPT TEMTEX THERMOWELL X 9" INSERTION	SA-479-316/L		-
L	1	PIPE TITE BOOT - SIZE 2, FLAT, SILICONE	SS/SILICONE		-
M,N,P,Q	4	STOOL - OMEGA STOOL FOR 1 1/2" SCH 40S PIPE	SA-312-304/L		OS
R	4	PIPE - 1 1/2" SCH 40S WLD PIPE, MNPT ONE END	SA-312-304/L		-
S	4	PIPE TITE BOOT - SIZE 3, FLAT, SILICONE	SS/SILICONE		-
R,S,T	3	BOLT CONNECT - 2" TCI BOLT CONNECT X 1 1/2" THK BASE	SA-479-316/L		CUT
U	1	ALCOVE - 12GA	SA-240-304/L		CUT



A & B PROCESS SYSTEMS
 A DIVISION OF JBT CORPORATION
 21700 STAINLESS AVE
 STRATFORD, CT 06464
 (715) 857-4332
 www.abprocess.com

JBT. A&B PROCESS SYSTEMS

TITLE: PORTABLE ELVIS TANKS
 SCALE: 1/8" = 1"
 SHEET: 1 of 1
 REV: A