

# MODEL 322 COLUMN DUMPER



E-EQUIP IS DEDICATED TO PRODUCING THE FINEST AND MOST RELIABLE COLUMN DUMPERS MADE IN THE U.S.A.

ENGINEERED FOR PRODUCTIVITY, OUR COLUMN DUMPERS ARE CONSTRUCTED TO COMBINE YEARS OF DEPENDABLE SERVICE WITH:

- EASY OPERATION AND ACCESS
- OPTIMAL SANITATION
- DESIGNED FOR SAFETY



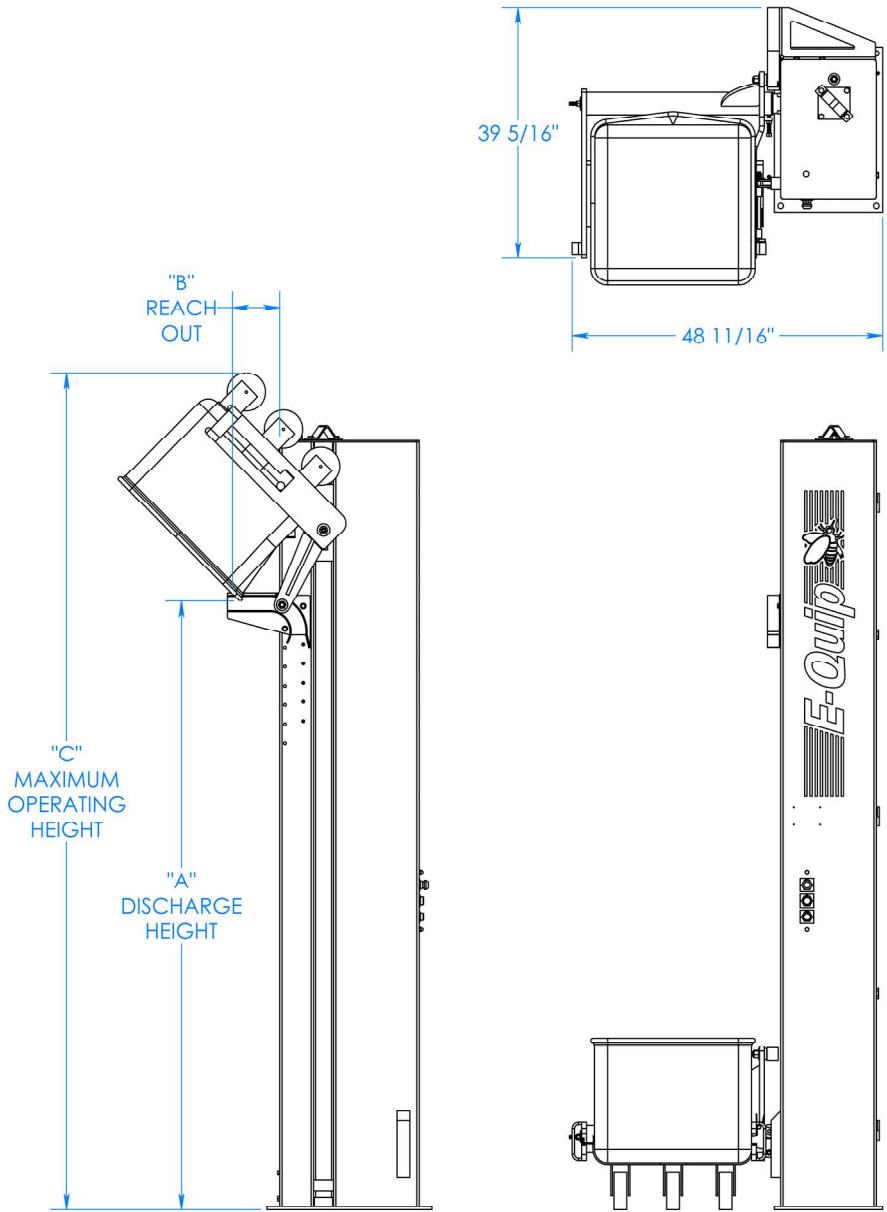
E-EQUIP MFG. CO., INC.  
230 INDUSTRY AVENUE FRANKFORT, IL 60423

<b>"A" DISCHARGE HEIGHT RANGE (IN 3" ADJUSTABLE INCREMENTS)</b>						
	9 FT. DUMPER	10 FT. DUMPER	11 FT. DUMPER	12 FT. DUMPER	13 FT. DUMPER	14 FT. DUMPER
400 LB. CART	66-1/2" TO 84-1/2"	78-1/2" TO 96-1/2"	90-1/2" TO 108-1/2"	102-1/2" TO 120-1/2"	114-1/2" TO 132-1/2"	126-1/2" TO 144-1/2"
600 LB. CART	60-7/8" TO 78-7/8"	72-7/8" TO 90-7/8"	84-7/8" TO 102-7/8"	96-7/8" TO 114-7/8"	108-7/8" TO 126-7/8"	120-7/8" TO 138-7/8"
CADDY ATTACHMENT ADDS 1-7/8" TO MEASUREMENTS				CADDY NOT AVAILABLE AT THIS HEIGHT		

<b>"B" REACH OUT</b>	
400 LB. CART	6"
600 LB. CART	13"

**NOTE: DIMENSION ARE APPROXIMATE DUE TO VARYING CART SIZES**

	9 FT. DUMPER	10 FT. DUMPER	11 FT. DUMPER	12 FT. DUMPER	13 FT. DUMPER	14 FT. DUMPER
<b>"C" MAX OPERATING HEIGHT</b>	124"	136"	148"	160"	172"	184"
CADDY ATTACHMENT ADDS 1-7/8" TO MEASUREMENTS				CADDY NOT AVAILABLE AT THIS HEIGHT		



## PRODUCTIVITY FEATURES

1000 LB. CAPACITY  
ADJUSTABLE DUMP HEIGHT (3" INCREMENTS)  
VARIABLE DISCHARGE ANGLE UP TO 40 DEG

## RELIABILITY FEATURES

HIGH EFFICIENCY/OUTPUT GEAR MOTOR  
POSITIVE NICKLE-PLATED LIFT CHAIN (NO. 100)  
STAINLESS STEEL SPROCKETS

## SANITARY FEATURES

STAINLESS STEEL T-304 CONSTRUCTION  
FULL LENGTH HINGED DOOR ASSEMBLY  
USDA ACCEPTED

## STANDARD ELECTRICAL FEATURES

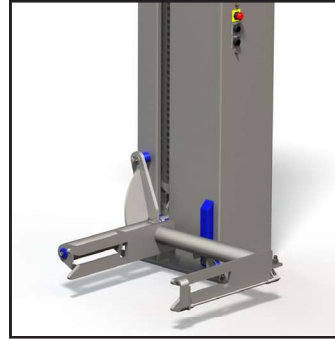
STAINLESS UL LISTED NEMA 4X CONTROL PANEL  
START/STOP PUSHBUTTONS  
240/480V 3 PHASE STANDARD



OPTIONAL CHUTE ATTACHMENT



OPTIONAL BARREL ATTACHMENT



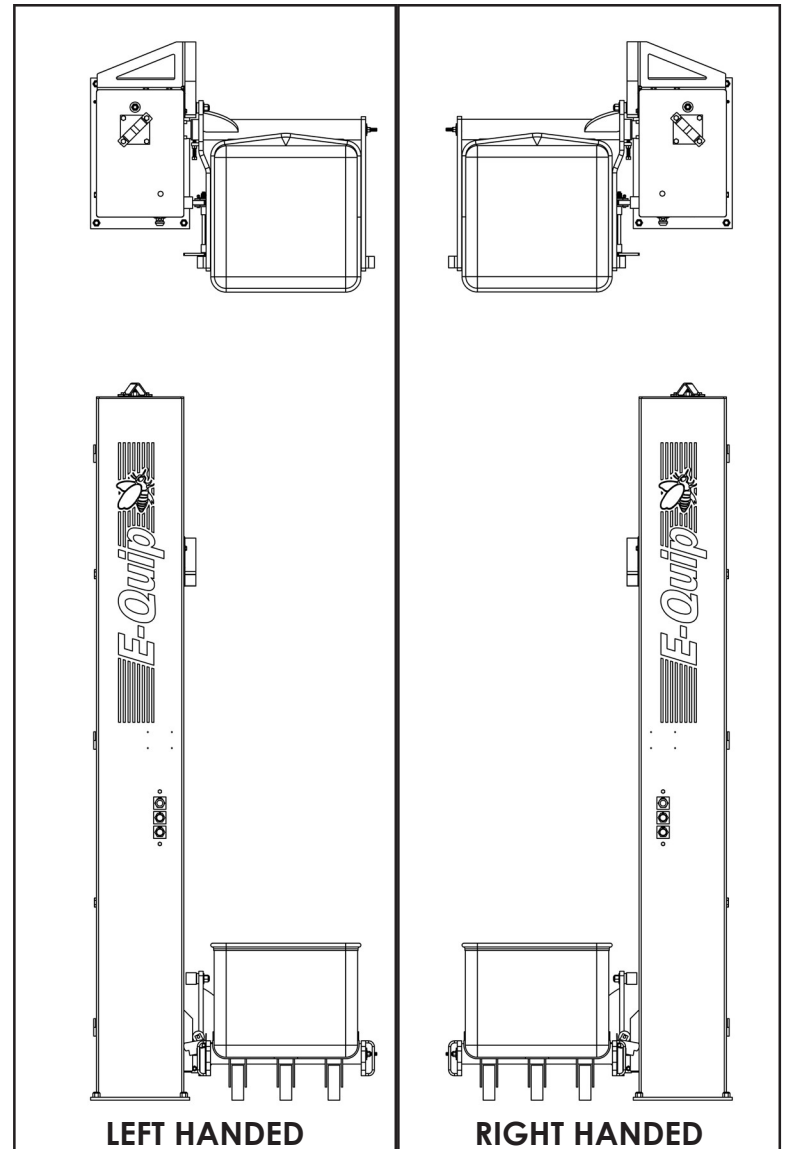
OPTIONAL SIDE LOAD LIFTING  
CARRIAGE



OPTIONAL PORTABLE CADDY  
ATTACHMENT

## AVAILABLE OPTIONS:

- **PROGRAMMABLE CONTROLLER** - Provides ease of control by allowing custom synchronization of equipment. The soft start/stop switching and variable speed control can enhance productivity.
- **WARNING LIGHTS AND SAFETY HORN** - Safety indicators to protect personnel and equipment.
- **CUSTOM CARRIAGE ASSEMBLIES** - Designed to accommodate barrels, drums, or any unique requirements.
- **CHUTES** - Customized to control and direct product flow.
- **PORTABLE CADDIES** - Sturdy caddies with four swivel casters and floor brake.
- **ALTERNATE CONFIGURATIONS** - Available in left hand or right hand configuration.
- **OTHER VOLTAGES UPON REQUEST**



LEFT HANDED

RIGHT HANDED



☎ (815)464-0053

📍 230 INDUSTRY AVENUE FRANKFORT, IL 60423

🌐 [www.e-quipmfg.com](http://www.e-quipmfg.com)