

| ITEM # | | JOB# | DESCRIPTION | HP | VOLTS | FULL LOAD AMPS |
|--------|---|-------|---|----|-------|----------------|
| 1 | 1 | 13751 | MAIN ASSEMBLY, VM10000C, 45"DH, SPLIT COVER | | | |
| | 1 | | AGITATOR MOTOR 1 | 50 | 480 | 65 |
| | 1 | | AGITATOR MOTOR 2 | 50 | 480 | 65 |
| | 1 | | VACUUM PUMP | 25 | 480 | 33 |

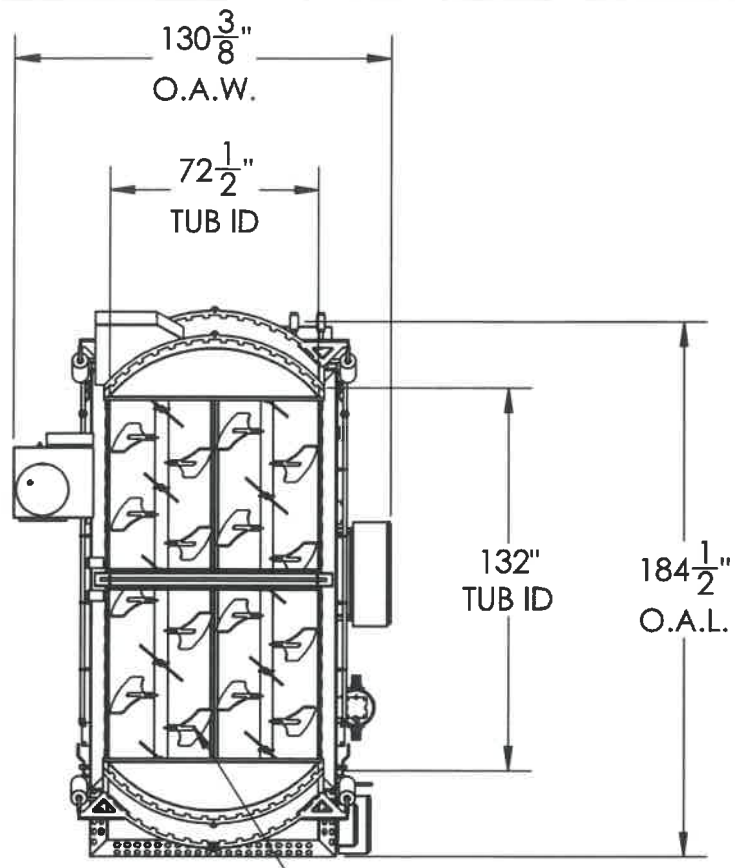
PLEASE COMPLETE RELEVANT SPEC REQ.

CUSTOMER: MISTICA FOODS
 CUSTOMER PO NO: Q023915-00
 AMFEC SO NO: 59895 REF LAYOUT: _____

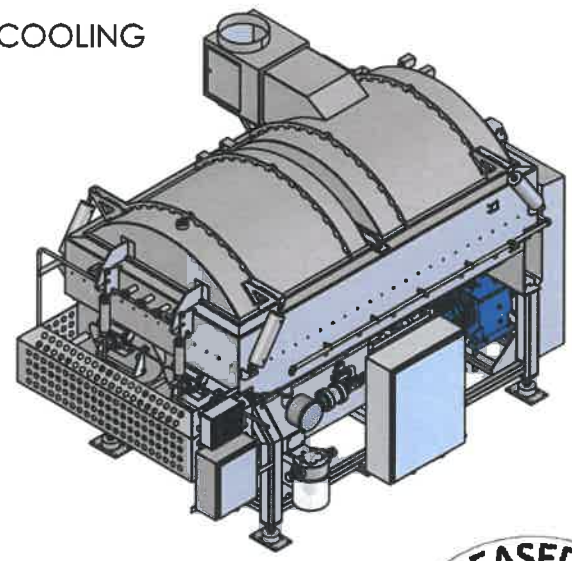
SPECS:
 1. CUSTOMER TO FILL IN INFORMATION AS FOLLOWS:
 A. ACCESS INTO PLANT:
 DOOR HEIGHT: _____
 DOOR WIDTH: _____
 CEILING HEIGHT: _____
 B. PRODUCT INFORMATION
 TYPE: _____
 SIZE: _____
 TEMPERATURE: _____
 C. DISCHARGE HEIGHT: _____
 D. LOAD HEIGHT: _____
 E. RATE (IF APPLICABLE): _____

2. PLANT VOLTAGE
 575/3PH/60HZ
 480/3PH/60HZ
 240/3PH/60HZ
 220/3PH/60HZ
 208/3PH/60HZ
 OTHER _____

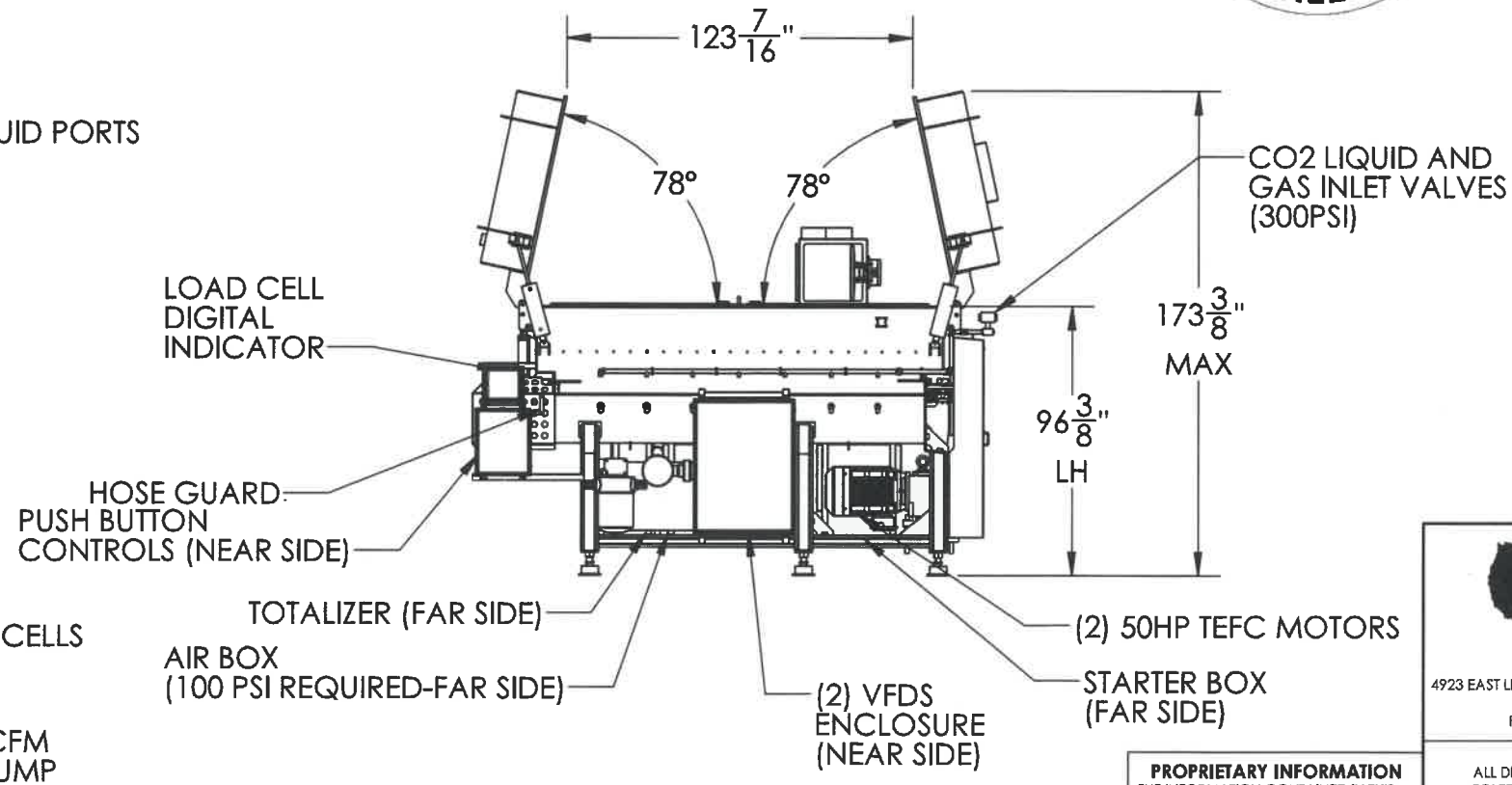
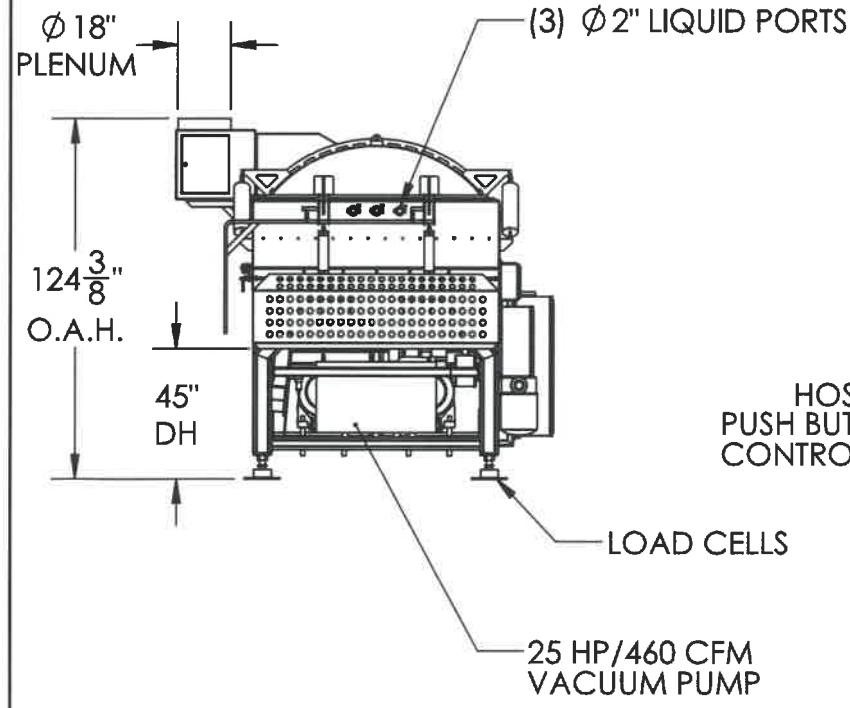
APPROVAL
 APPROVED AS DRAWN
 APPROVED AS NOTED
 REVISE AND RESUBMIT
 APPROVAL DATE: 2/11/22
 APPROVAL SIGNATURE: [Signature]



- INCLUDES:
- PUSH BUTTON CONTROLS
 - BOTTOM INJECTION CO2 COOLING
 - LOAD CELLS



VARIABLE PITCH AGITATORS
 NOMINAL SPEED: 24.4 RPM



| DESCRIPTION | BY | APP | PM | DATE |
|-----------------|--------|-----|---------|-----------|
| INITIAL RELEASE | BCLINE | | J. Vega | 2/11/2022 |

PROPRIETARY INFORMATION
 THE INFORMATION CONTAINED IN THIS DRAWING IS THE SOLE PROPERTY OF AMERICAN FOOD EQUIPMENT CO. ANY REPRODUCTION IN PART OR AS A WHOLE WITHOUT PRIOR THE WRITTEN PERMISSION OF AMERICAN FOOD EQUIPMENT CO. IS PROHIBITED.

AMFEC
 4923 EAST LINDEN ST. CALDWELL, ID 83605
 (208) 614-6030
 FAX: (208) 614-6050

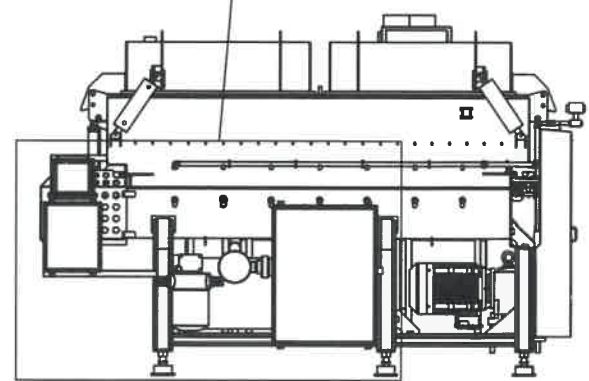
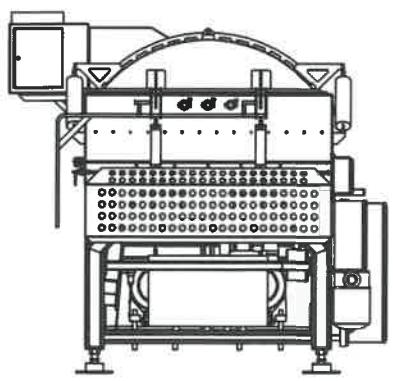
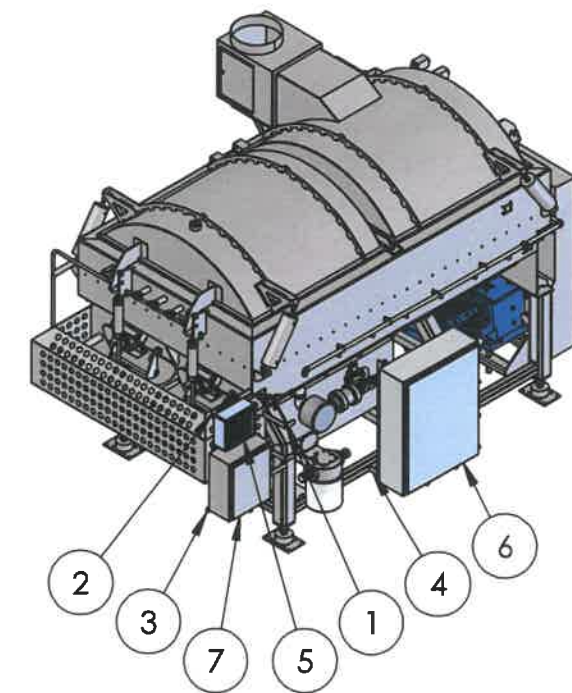
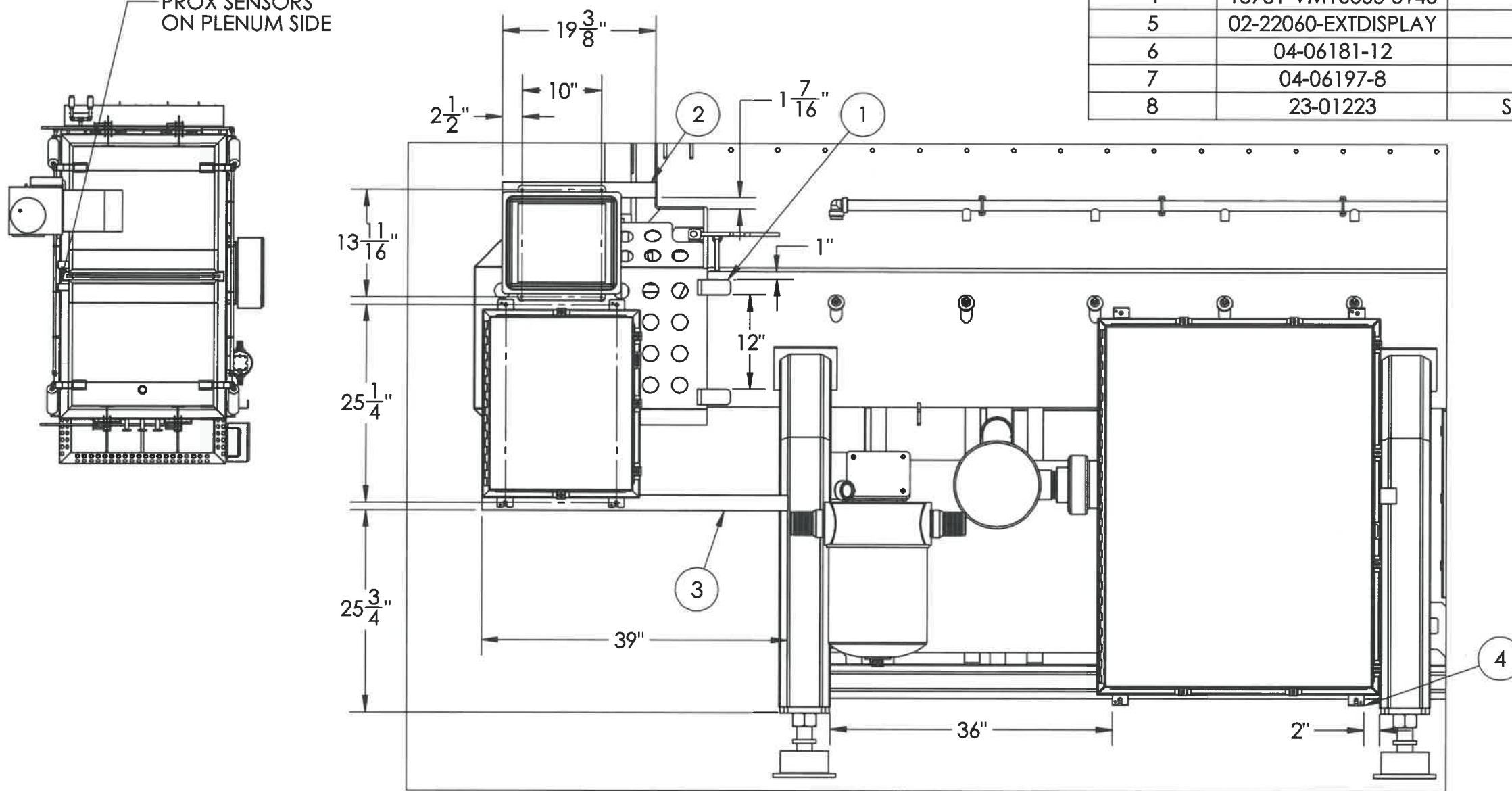
AMERICAN FOOD EQUIPMENT CO.
 TITLE: EQUIPMENT PROPOSAL FOR MISTICA FOODS
 10K VACUUM MIXER

DWG. NO. 13751-RTE
 SCALE: 1:64 SIZE **B** JO#: 13751 SHEET 1/1

ALL DIMENSIONS ARE IN INCHES
 TOLERANCES ARE:
 FRACTIONAL ± 1/32
 .X = ±.060 ANGLES:
 .XX = ±.030 MACHINED = ±1/2°
 .XXX = ±.010 BENDS: ±1°
 THIRD ANGLE PROJECTION

| ITEM NO. | PART NUMBER | DESCRIPTION | QTY. |
|----------|---------------------|-------------------------------------|------|
| 1 | 13751-VM10000-3109 | HOSE GUARD BRACKET | 2 |
| 2 | 13751-VM10000-3110 | DIGITAL INDICATOR MOUNT | 1 |
| 3 | 13751-VM10000-3111 | CONTROL MOUNT, VM 10000 | 1 |
| 4 | 13751-VM10000-5145 | FRAME, BRACKET UPDATE | 1 |
| 5 | 02-22060-EXTDISPLAY | LOAD CELL DISPLAY (EXTERNAL) | 1 |
| 6 | 04-06181-12 | ENCLOSURE, SST, A-48H3612SSLP | 1 |
| 7 | 04-06197-8 | ENCLOSURE, SST, A-24H2008SSLP | 1 |
| 8 | 23-01223 | SPACER, ROUND 3/8-16NC, 1 DIA X 5/8 | 4 |

PROX SENSORS
ON PLENUM SIDE



DETAIL A
SCALE 1:16

| REV | DESCRIPTION | BY | APP | PM | DATE |
|-----|-----------------|-------|-----|--------------------|-----------|
| A | INITIAL RELEASE | MROOK | | <i>[Signature]</i> | 2/15/2022 |

PROPRIETARY INFORMATION
THE INFORMATION CONTAINED IN THIS DRAWING IS THE SOLE PROPERTY OF AMERICAN FOOD EQUIPMENT CO. ANY REPRODUCTION IN PART OR AS A WHOLE WITHOUT PRIOR THE WRITTEN PERMISSION OF AMERICAN FOOD EQUIPMENT CO. IS PROHIBITED.

AMERICAN FOOD EQUIPMENT CO.

TITLE:
**MIXER UPDATES
MISTICA FOODS**

DWG. NO.
13751-VM10000-1045C

SCALE: 1:64 SIZE **B** JO#: **13751 MR** SHEET 1 / 1

ALL DIMENSIONS ARE IN INCHES
TOLERANCES ARE:
FRACTIONAL ± 1/32
.X = ±.060 ANGLES:
.XX = ±.030 MACHINED = ±1/2°
.XXX = ±.010 BENDS: ±1°

THIRD ANGLE PROJECTION